

2016 | **EDGE**



**SPECIFICATIONS**



**Go Further**

# Edge Specifications



## Engines/EPA-Estimated Ratings<sup>1</sup> & Dimensions

### 2.0L EcoBoost®

245 hp @ 5,500 rpm<sup>2</sup>

275 lb.-ft. of torque @ 3,000 rpm<sup>2</sup>

6-speed SelectShift automatic

FWD 20 city/30 hwy/24 combined mpg

AWD 20 city/28 hwy/23 combined mpg

### 2.0L EcoBoost with Auto Start-Stop

245 hp @ 5,500 rpm<sup>2</sup>

275 lb.-ft. of torque @ 3,000 rpm<sup>2</sup>

6-speed SelectShift automatic

FWD 21 city/30 hwy/24 combined mpg

### 3.5L Ti-VCT V6

280 hp @ 6,500 rpm

250 lb.-ft. of torque @ 4,000 rpm

6-speed SelectShift automatic

FWD 18 city/26 hwy/21 combined mpg

AWD 17 city/25 hwy/20 combined mpg

### 2.7L EcoBoost V6

315 hp @ 4,750 rpm<sup>2</sup>

350 lb.-ft. of torque @ 2,750 rpm<sup>2</sup>

6-speed SelectShift automatic

AWD 17 city/24 hwy/20 combined mpg

### Exterior

Wheelbase	112.2"
Length	188.1"
Height	68.6"
Width – Excluding mirrors	75.9"
Width – Including mirrors	85.8"
Width – Mirrors folded	78.4"
Liftover height	29.7"

### Interior

	Front/Rear
Head room	40.2"/40.3"
Shoulder room	60.3"/60.5"
Hip room	55.9"/57.5"
Leg room	42.6" (max.)/40.6"

### Capacities (cu. ft.)

Passenger volume	113.9
Cargo volume behind front seats	73.4
Cargo volume behind rear seats	39.2
Fuel tank (gal.)	
FWD/AWD	18.4/18.5

## Standard Features

### Mechanical

6-speed SelectShift® automatic transmission with paddle activation
4-wheel independent suspension
Electric power-assisted steering
Front-wheel drive (FWD)
Hill start assist
Power disc brakes with Anti-Lock Brake System (ABS)
Torque Vectoring Control

### Seating

Front bucket seats with 4-way adjustable head restraints
Rear 60/40 split fold-flat seat with manually reclining seat backs and folding center armrest with 2 cupholders

### Interior

12-volt powerpoints (2 in 1st row, 1 in 2nd row and 1 in rear cargo area)
Acoustic-laminate windshield
Adjustable driver and front-passenger sun visors with illuminated vanity mirrors
Air conditioning
Below-floor Cargo Management System
Cargo area tie-downs and hooks
Cargo net
Center console with storage tray, armrest, powerpoint and 2 cupholders
Coat hooks (2)
Compass and outside temperature displays
Cupholders/beverage holders (8)
Front-passenger (1) and B-pillar (2) assist handles
Intelligent Access with push-button start
Leather-wrapped shift knob
Manual tilt/telescoping steering column
Map pockets in driver and front-passenger seat backs
Overhead console with sunglasses holder
Power door locks
Power windows with one-touch-up/-down feature for driver and front-passenger windows
Rear-window defroster
Steering wheel-mounted cruise, audio and 5-way controls (2)

### Exterior

Automatic headlamps with wiper activation
Body-color rear spoiler
Configurable LED daytime running lamps
Dual bright exhaust tips
Easy Fuel® capless fuel filler
LED taillamps
Power sideview mirrors with integrated blind spot mirrors and manual fold-away design
Privacy glass (rear doors, rear quarter windows and liftgate window)
Quad-beam halogen headlamps
Wipers – Front: speed-sensitive, variable-intermittent with washer; rear: 2-speed with washer

### Safety & Security

Personal Safety System™ for driver and front passenger includes dual-stage front airbags, <sup>3</sup> safety belt pretensioners, safety belt energy-management retractors, safety belt usage sensors, driver's seat position sensor, crash severity sensor, restraint control module and Front-Passenger Sensing System
AdvanceTrac® with RSC® (Roll Stability Control™) and Curve Control
Battery saver with headlamps-off delay
Belt-Minder® front safety belt reminder
Child-safety rear door locks
Driver's knee airbag <sup>3</sup>
Front height-adjustable shoulder safety belts
Front-seat side airbags <sup>3</sup>
Glove-box-door-integrated knee airbag <sup>3</sup>
LATCH – Lower Anchors and Tether Anchors for Children (2 in rear outboard seating positions)
MyKey®
Rear view camera
Safety Canopy® System with side-curtain airbags <sup>3</sup> and rollover sensor
SecuriLock® Passive Anti-Theft System
SOS Post-Crash Alert System™
Tire Pressure Monitoring System (excludes spare)

Dimensions may vary by trim level.

<sup>1</sup>Actual mileage will vary. <sup>2</sup>Tested with 93-octane fuel. <sup>3</sup>Always wear your safety belt and secure children in the rear seat.

2016 **EDGE**  
ford.com





SEL. Magnetic. Available equipment.

SEL. 73.4-cu.-ft. rear cargo area. Available equipment.

SEL. Panoramic Vista Roof.<sup>1</sup>

## SE

### Equipment Group 100A

Includes all standard features, plus:

#### Mechanical

2.0L EcoBoost® engine with Active Grille Shutters and Auto Start-Stop (Auto Start-Stop n/a with AWD)

#### Seating

6-way manual driver's seat

4-way manual front-passenger seat

Cloth seats

#### Interior

AM/FM stereo/single-CD player with MP3 capability and 6 speakers

Dark Ano Gray instrument panel appliqué

Dark Slate Metallic center stack finish

Front and rear carpeted floor mats

SYNC® Enhanced Voice Recognition Communications and Entertainment System with 4.2" color LCD screen in center stack, AppLink™ 911 Assist®, and media hub with smart-charging USB port

#### Exterior

18" Sparkle Silver-painted aluminum wheels with P245/60R18 all-season BSW tires

Black sideview mirrors

Body-color door handles

Bright grille

#### Available Options & Package

2nd-row outboard inflatable safety belts

All-wheel drive (AWD)

Black roof-rack side rails

**Cargo Accessories Package** includes interior cargo cover, cargo area protector and rear bumper protector

Dual Headrest DVD by INVISION™<sup>2</sup>

Front and rear all-weather floor mats

Locking wheel lug nuts

P235/60R18 all-season snow chain-compatible tires

## SEL

### Equipment Group 200A

Includes select SE features, plus:

#### Mechanical

2.0L EcoBoost engine with Active Grille Shutters

#### Seating

10-way power driver's seat

6-way power front-passenger seat

EasyFold® rear seat back release

Unique cloth seats

#### Interior

Auto-dimming rearview mirror

Dual-zone electronic automatic temperature control

Leather-wrapped steering wheel

Pewter-appearance instrument panel appliqué

Satin Twilight accents

SiriusXM® Satellite Radio with 6-month All Access trial subscription

#### Exterior

18" Sparkle Silver-painted split-spoke aluminum wheels with P245/60R18 all-season BSW tires

Body-color, heated sideview mirrors with security approach lamps and integrated LED turn signal indicators

Bright beltline moldings

LED signature lamps

Reverse Sensing System

SecuriCode™ invisible keypad

### Available Equipment Group

**Equipment Group 201A** – SYNC 3 Enhanced Voice Recognition Communications and Entertainment System with 8" color LCD touch screen in center stack with swiping capability, 911 Assist, AppLink and 2 smart-charging USB ports + leather-trimmed, heated front seats + Premium Audio System with 9 speakers

#### Available Options & Packages

3.5L Ti-VCT V6 engine

18" polished aluminum wheels (requires 201A)

2nd-row outboard inflatable safety belts

All-wheel drive (AWD)

Black roof-rack side rails (n/a with Vista Roof®)

**Cargo Accessories Package** includes interior cargo cover, cargo area protector and rear bumper protector

**Class II Trailer Tow Package** includes trailer sway control

**Cold Weather Package** includes heated steering wheel, and front and rear all-weather floor mats (requires 201A)

Dual Headrest DVD by INVISION™<sup>2</sup>

Front and rear all-weather floor mats

Locking wheel lug nuts

P235/60R18 all-season snow chain-compatible tires

Panoramic Vista Roof (requires 201A)

**Technology Package** includes voice-activated Navigation System with pinch-to-zoom capability, and integrated SiriusXM Traffic and Travel Link® with 5-year trial subscription, BLIS® (Blind Spot Information System) with cross-traffic alert, Remote Start System, auto-dimming driver's sideview mirror, and 110-volt power outlet (requires 201A)

**Utility Package** includes hands-free foot-activated liftgate, perimeter alarm, and universal garage door opener (requires 201A)



18" Sparkle Silver-Painted Aluminum  
Standard: SE



18" Sparkle Silver-Painted Split-Spoke Aluminum  
Standard: SEL



18" Polished Aluminum  
Available: SEL

<sup>1</sup>Available feature. <sup>2</sup>Ford Licensed Accessory.



# Titanium

## Equipment Group 300A

*Includes select SEL features, plus:*

### Seating

10-way power driver and front-passenger seats with driver's memory feature

Heated front sport-style bucket seats

Leather-trimmed seats

### Interior

Acoustic-laminate front-door glass

Ambient lighting

Audio System from Sony® with 12 speakers and HD Radio™ Technology

Illuminated front door-sill plates

Mechanical Stripe aluminum instrument panel appliqué

Metal-plated accents

SYNC® 3 Enhanced Voice Recognition Communications and Entertainment System with 8" color LCD touch screen in center stack with swiping capability, 911 Assist® AppLink™ and 2 smart-charging USB ports

Universal garage door opener

### Exterior

19" premium Luster Nickel-painted aluminum wheels with P245/55R19 all-season BSW tires

Body-color door handles with bright inserts

Body-color, heated sideview mirrors with integrated LED turn signal indicators, security approach lamps and memory feature

Hands-free foot-activated liftgate

LED taillamps with light bar

Perimeter alarm

## Available Equipment Groups

### Equipment Group 301A – Technology Package

includes voice-activated Navigation System with pinch-to-zoom capability, and integrated SiriusXM® Traffic and Travel Link® with 5-year trial subscription, BLIS® (Blind Spot Information System) with cross-traffic alert, Remote Start System, auto-dimming driver's sideview mirror, and 110-volt power outlet + perforated leather-trimmed seats + heated and cooled front seats + heated rear outboard seats + panoramic Vista Roof®

**Equipment Group 302A** – Includes all content of 301A + Lane-Keeping System + enhanced active park assist with side parking sensors + front 180-degree camera with washer + HID headlamps with auto high beams + rain-sensing windshield wipers + 2nd-row outboard inflatable safety belts

### Available Options & Packages

3.5L Ti-VCT V6 engine

20" polished aluminum wheels with Dark Stainless-painted pockets

2nd-row outboard inflatable safety belts (included on 302A)

All-wheel drive (AWD)

**Cargo Accessories Package** includes interior cargo cover, cargo area protector and rear bumper protector

**Class II Trailer Tow Package** includes trailer sway control

**Cold Weather Package** includes heated steering wheel, and front and rear all-weather floor mats

**Driver's Package** includes adaptive cruise control and collision warning with brake support, adaptive steering and power-tilt/-telescoping steering column (requires 301A or 302A)

Dual Headrest DVD by INVISION™<sup>1</sup>

Front and rear all-weather floor mats

Locking wheel lug nuts

P235/60R18 all-season snow chain-compatible tires (requires and only available with 18" polished aluminum wheels)

Panoramic Vista Roof (included on 301A and 302A)

Silver roof-rack side rails (300A only; n/a with Vista Roof)

**Technology Package** includes voice-activated Navigation System with pinch-to-zoom capability, and integrated SiriusXM Traffic and Travel Link with 5-year trial subscription, BLIS (Blind Spot Information System) with cross-traffic alert, Remote Start System, auto-dimming driver's sideview mirror, and 110-volt power outlet (included on 301A and 302A)



*Bronze Fire Metallic Tinted Clearcoat. Available equipment.*

*2nd-row outboard inflatable safety belts.<sup>2</sup> Ceramic leather trim. Available equipment.*

*39.2 cu. ft. of cargo space behind 2nd row.*

*HID headlamps with auto high beams.<sup>2</sup>*

*LED taillamps with light bar.*



18" Polished Aluminum  
Available (requires  
snow chain-compatible tires)



19" Premium Luster Nickel-  
Painted Aluminum  
Standard



20" Polished Aluminum with  
Dark Stainless-Painted Pockets  
Available

<sup>1</sup>Ford Licensed Accessory. <sup>2</sup>Available feature.



*Electric Spice. Available equipment.*

*Unique Sport door-trim inserts.*

*2.7L EcoBoost V6, twin-turbocharged, direct-injection engine.*

*Aluminum brake and accelerator pedal covers.*

*Trapezoidal fascia-integrated dual bright exhaust outlets.*



20" Polished Aluminum with Low-Gloss Magnetic-Painted Pockets  
Standard



21" Premium Tarnished Dark-Painted Aluminum  
Available

## Sport

### Equipment Group 400A

*Includes select SEL features, plus:*

#### Mechanical

2.7L EcoBoost® V6 engine with Active Grille Shutters

All-wheel drive (AWD)

Sport-tuned suspension

#### Seating

10-way power, heated driver and front-passenger seats with driver's memory feature

Leather-trimmed seats with perforated sueded cloth inserts

#### Interior

Acoustic-laminate front-door glass

Aluminum brake and accelerator pedal covers

Ambient lighting

Audio System from Sony® with 12 speakers and HD Radio™ Technology

Brush weave aluminum instrument panel appliqué

Deluxe front and rear carpeted floor mats

Illuminated front door-sill scuff plates

Metal-plated accents

Power-tilt/-telescoping steering column

SYNC® 3 Enhanced Voice Recognition Communications and Entertainment System with 8" color LCD touch screen in center stack with swiping capability, 911 Assist®, AppLink™ and 2 smart-charging USB ports

Universal garage door opener

#### Exterior

20" polished aluminum wheels with low-gloss Magnetic-painted pockets and P245/50R20 all-season BSW tires

Black beltline moldings

Body-color cladding

Body-color front and rear bumpers

Body-color, heated sideview mirrors with integrated LED turn signal indicators, security approach lamps and memory feature

Dual bright exhaust outlets integrated into rear trapezoidal fascia

Hands-free foot-activated liftgate

LED taillamps with light bar

Perimeter alarm

Piano Black grille with Magnetic accents

Unique body-color front and rear lower fascias

Unique headlamp treatment

### Available Equipment Group

#### Equipment Group 401A – Technology Package

includes voice-activated Navigation System with pinch-to-zoom capability, and integrated SiriusXM® Traffic and Travel Link® with 5-year trial subscription, BLIS® (Blind Spot Information System) with cross-traffic alert, Remote Start System, auto-dimming driver's sideview mirror, and 110-volt power outlet + Lane-Keeping System + enhanced active park assist with side parking sensors + front 180-degree camera with washer + HID headlamps with auto high beams + rain-sensing windshield wipers + heated and cooled front seats + heated rear outboard seats

#### Available Options & Packages

21" premium Tarnished Dark-painted aluminum wheels

2nd-row outboard inflatable safety belts

Adaptive cruise control and collision warning with brake support

**Cargo Accessories Package** includes interior cargo cover, cargo area protector and rear bumper protector

**Cold Weather Package** includes heated steering wheel, and front and rear all-weather floor mats

Dual Headrest DVD by INVISION™<sup>1</sup>

Front and rear all-weather floor mats

Locking wheel lug nuts

Panoramic Vista Roof®

Remote Start System (included on 401A)

Summer-only performance tires<sup>2</sup> (requires 21" wheels)

**Technology Package** includes voice-activated Navigation System with pinch-to-zoom capability, and integrated SiriusXM Traffic and Travel Link with 5-year trial subscription, BLIS (Blind Spot Information System) with cross-traffic alert, Remote Start System, auto-dimming driver's sideview mirror, and 110-volt power outlet (included with 401A)

<sup>1</sup>Ford Licensed Accessory. <sup>2</sup>Ford does not recommend using summer tires when temperatures drop to approximately 45°F or below (depending on tire wear and environmental conditions) or in snow/ice conditions. If the vehicle must be driven in these conditions, Ford recommends using all-season or snow tires.



Exteriors



White Platinum Metallic Tri-coat



Oxford White



Ingot Silver\*



Ruby Red Metallic Tinted Clearcoat



Bronze Fire Metallic Tinted Clearcoat



Too Good to Be Blue\*



Kona Blue\*



Electric Spice\*



Magnetic\*



Shadow Black

\*Metallic.

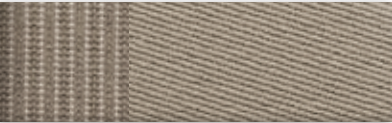
Interiors



1 Dune Cloth



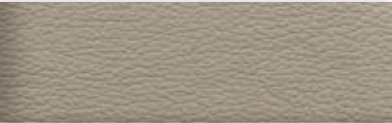
2 Ebony Cloth



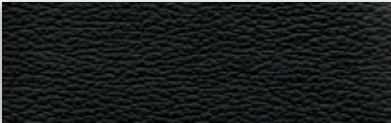
3 Unique Dune Cloth



4 Unique Ebony Cloth



5 Dune Leather



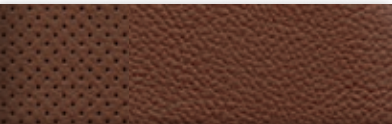
6 Ebony Leather



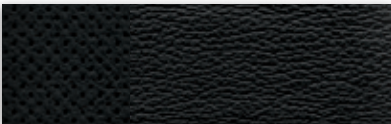
7 Ceramic Leather



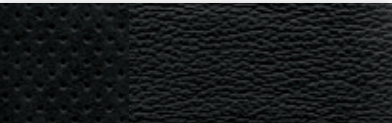
8 Ceramic Leather with Perforated Inserts



9 Cognac Leather with Perforated Inserts



10 Ebony Leather with Perforated Inserts



11 Ebony Leather with Perforated Sueded Cloth Inserts

Exteriors	SE		Interiors				Titanium					Sport
			SEL				6	7	8	9	10	
White Platinum Metallic Tri-coat <sup>1</sup>			3	4	5	6						
Oxford White			3	4	5	6						
Ingot Silver	1	2	3	4	5	6	6	7	8	9	10	11
Ruby Red Metallic Tinted Clearcoat <sup>1</sup>			3	4	5	6	6	7	8	10		11
Bronze Fire Metallic Tinted Clearcoat <sup>1</sup>			3	4	5	6	6	7	8	9	10	11
Too Good to Be Blue	1	2	3	4	5	6	6	7	8	10		11
Kona Blue	1	2	3	4	5	6	6	7	8	9	10	11
Electric Spice			4	6			6	7	8	10		11
Magnetic	1	2	3	4	5	6	6	7	8	9	10	
Tuxedo Black	1	2	3	4	5	6	6	7	8	9	10	11

5, 6 Requires 201A on SEL 8, 9, 10 Requires 301A or 302A

<sup>1</sup>Additional charge.  
Colors are representative only. See your dealer for actual paint/trim options.





*SE in Magnetic accessorized with smoked side window deflectors, Aeroskin™ hood protector by Lund®<sup>1</sup> front and rear molded splash guards, keyless entry keypad, roof rails, and roof-mounted crossbars and cargo box by THULE®<sup>1,2</sup>*

*Remote Access*

*All-weather floor mats*

*Dual Headrest DVD by INVISION™<sup>1</sup>*

*Cargo area protector, interior cargo cover and rear bumper protector*

#### **Exterior**

Full vehicle cover<sup>1</sup>  
Hood protector<sup>1</sup>  
Racks and carriers<sup>1,2</sup>  
Rear bumper protector  
Side window deflectors  
Splash guards  
Sportz® tent<sup>1</sup>  
Trailer towing accessories  
Wheel lock kit

#### **Interior**

All-weather and premium carpeted floor mats  
Ash cup/coin holders  
Auto-dimming rearview mirror  
Cargo organizers and protectors  
First aid and roadside assistance kits<sup>1</sup>  
In-vehicle safe<sup>1</sup>  
Interior light kit  
Leather-trimmed interior seating<sup>1</sup>  
Tablet cradle<sup>1</sup>

#### **Electronics**

Dual headrest DVD<sup>1</sup>  
Keyless entry keypad  
Remote Access  
Remote start systems  
Vehicle Security System  
Warning sensor systems<sup>1</sup>



**FORD ACCESSORIES**

[accessories.ford.com](http://accessories.ford.com)

<sup>1</sup>Ford Licensed Accessory. <sup>2</sup>Consult owner's manual for details on roof rack weight limits.



Go Further

[ford.com](http://ford.com)

Follow Ford:



**New Vehicle Limited Warranty.** We want your Ford Edge ownership experience to be the best it can be. Under this warranty, your new vehicle comes with 3-year/36,000-mile bumper-to-bumper coverage, 5-year/60,000-mile Powertrain Warranty coverage, 5-year/60,000-mile safety restraint coverage, and 5-year/unlimited-mile corrosion (perforation) coverage – all with no deductible. Please ask your Ford Dealer for a copy of this limited warranty.

**Roadside Assistance.** Covers your vehicle for 5 years or 60,000 miles, so you have the security of knowing that help may be only a phone call away should you run out of fuel, lock yourself out of the vehicle or need towing. Your Ford Dealer can provide complete details on all of these advantages.

**Ford Credit.** Get the ride you want. Whether you plan to lease or finance, you'll find the choices that are right for you at Ford Credit. Ask your Ford Dealer for details or check us out at [fordcredit.com](http://fordcredit.com).

**Ford Extended Service Plan.** For a purchase or lease, the Ford Extended Service Plan (ESP) gives you peace-of-mind protection designed to cover key vehicle components and protect you from the cost of unexpected repairs. Ask your dealer for a Ford ESP, the only service contract backed exclusively by Ford and honored at all Ford Lincoln dealerships.

**Insurance Services.** Get Ford Motor Company quality in your auto insurance. Our program offers industry-leading benefits and competitive rates. Call 1-877-367-3847, or visit us at [fordvip.com](http://fordvip.com) for a no-obligation quote. Insurance offered by American Road Services Company (in CA, American Road Insurance Agency), a licensed agency and subsidiary of Ford Motor Company.

**Ford Original Accessories** will be warranted for whichever provides you the greatest benefit: 24 months/unlimited mileage, or the remainder of your Bumper-to-Bumper 3-year/36,000-mile New Vehicle Limited Warranty. Ford Licensed Accessories (FLA) are warranted by the accessory manufacturer's warranty. FLA are designed and developed by the accessory manufacturer and have not been designed or tested to Ford Motor Company engineering requirements. Contact your Ford Dealer for details and/or a copy of all limited warranties.

Comparisons based on competitive models (class is Midsize Utilities based on Ford segmentation), publicly available information and Ford certification data at time of release. Vehicles may be shown with optional equipment. Features may be offered only in combination with other options or subject to additional ordering requirements/limitations. Dimensions shown may vary due to optional features and/or production variability. Information is provided on an "as is" basis and could include technical, typographical or other errors. Ford makes no warranties, representations, or guarantees of any kind, express or implied, including but not limited to, accuracy, currency, or completeness, the operation of the information, materials, content, availability, and products. Ford reserves the right to change product specifications, pricing and equipment at any time without incurring obligations. Your Ford Dealer is the best source of the most up-to-date information on Ford vehicles.

HD Radio is a proprietary trademark of iBiquity Digital Corp. INVISION is a trademark of VOXX International Corporation. SiriusXM services require a subscription, sold separately by SiriusXM after trial period. Fees and taxes apply. All fees and programming subject to change. Sirius satellite service is available only to those in the 48 contiguous USA, D.C. and PR (with coverage limitations). Our Internet radio service is available throughout our satellite service area and in AK and HI. Some channels not available in all lineups. Sirius, XM and all related marks and logos are trademarks of Sirius XM Radio Inc. Sony is a registered trademark of the Sony Corporation. THULE is a registered trademark of Thule Sweden AB.



Click here to learn more  
about your Edge